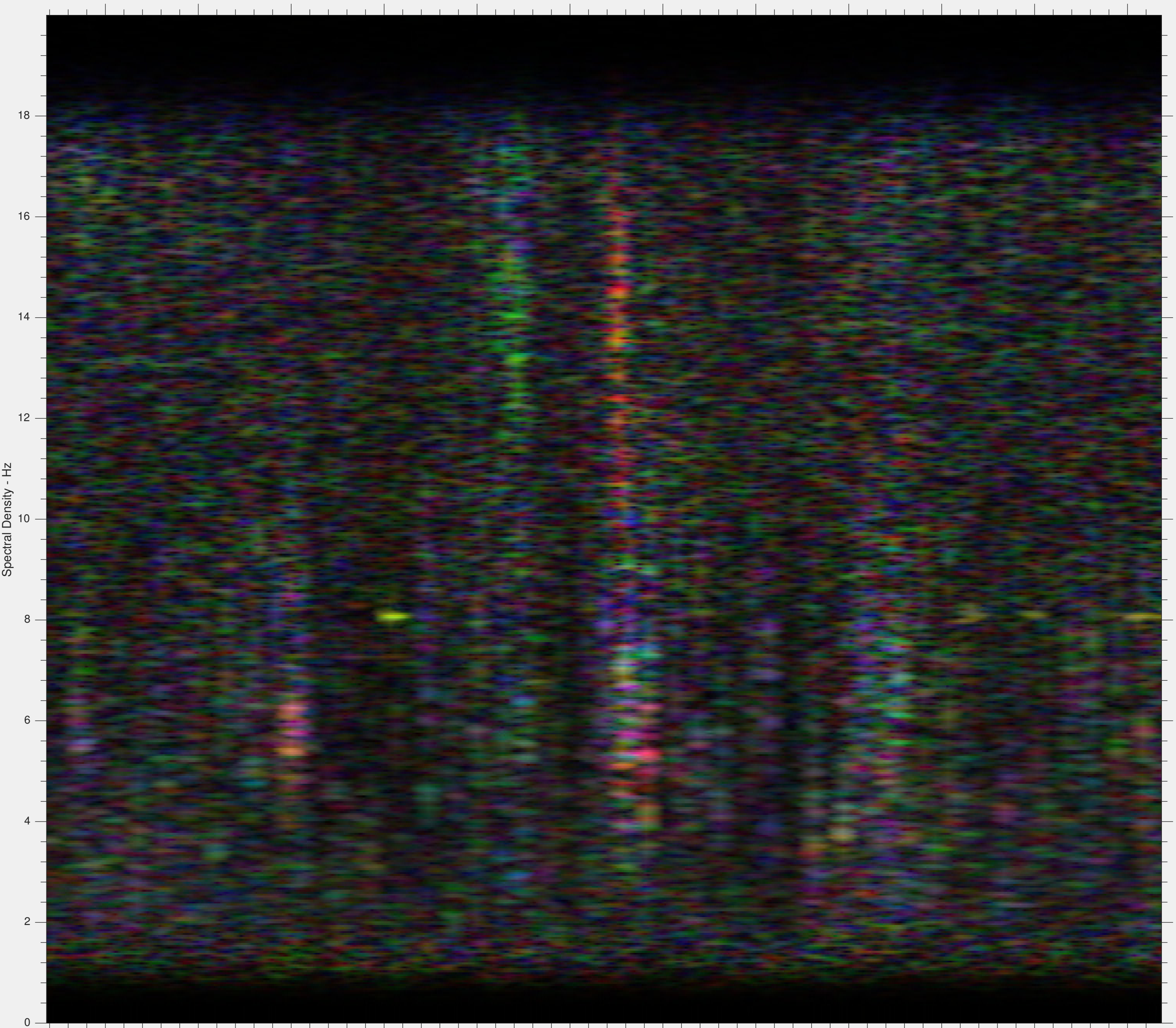


Seismic spectra plot  
II.COCO Cocos (Keeling) Island Lat: -12.1901 Lon: 96.8349  
1000 sample window @ 4.00000e+01 samples/s = 25 sec with bandwidth 2-20Hz  
Mar7 22:22:22 direct COCO flyover time +/- 6 min



b. Time (UTC) vs Multitaper Spectrogram - Color Channels: Red=East, Green=North, Blue=Z (vertical) energy